



— QUALITY —
MADE IN
GERMANY



HAAS TYRON

Double Shaft Slow Speed Shredder

The HAAS TYRON Slow Speed Shredder shreds difficult material such as

MSW · WOOD WASTE · PALETTES · RAILWAY SLEEPERS · RESIDUAL WASTE
DOMESTIC, COMMERCIAL AND BULKY WASTE · CABLE DRUMS · TYRES · PAPER ROLLS
GREEN WASTE · MATTRESSES · ROOTS · ALUMINIUM · FOOD WASTE



HAAS
Recycling-Systems

TYRON - the intelligent 2-Shaft System

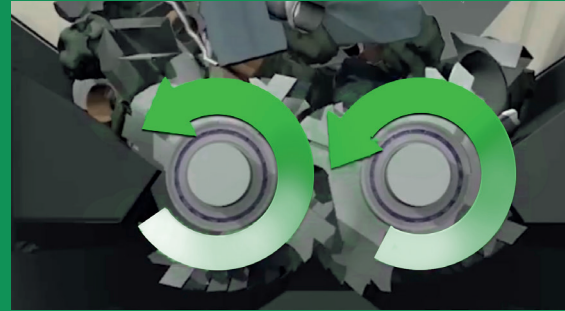
The machine with the Viking, the HAAS TYRON, is the ideal solution to an effective shredding of most difficult materials due to its intelligent 2-shaft-system.

Two independent shafts ensure highest flexibility!

Shaft speed, direction of rotation and reversing times can be adjusted, dependent on the material, by the customer at any time.

Wrapping of wire and long fibre material is avoided, throughput is maximised!

The intelligent and unique 2-shaft-system reduces wear and tear and downtimes, compared to shredders running synchronously.

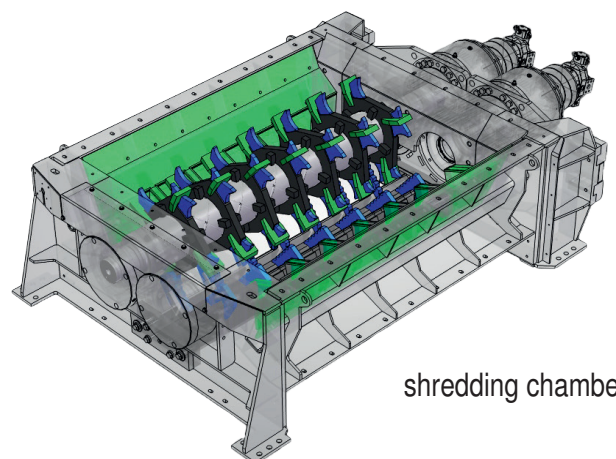


You can watch the video in our Youtube channel: <https://youtu.be/RuCBT7RnXJk>



Advantages

High throughput capacities of up to 100 t/h	✓
Resistent to foreign particles	✓
Low wear and tear costs, high longevity	✓
Easy access for service and maintenance works	✓
Very low noise emission	✓
Self-cleaning	✓



shredding chamber



STATIONARY VERSIONS / MOBILE VERSIONS



THE solution for the shredding in:

- RDF plants
- Incineration plants / combusters
- Compost plants
- Biomass plants
- Recycling plants / waste wood
- Domestic waste sorting plants

The Double Shaft Slow Speed Shredder TYRON captivates with its unique basic equipment:

- Strong diesel- and electric engines
- Breaker bar
- IFM display
- Central lubrication for rotor bearings
- Outfeed belt and tilting hopper
- 12-channel-remote control
- POWER-RAM pre-filter
- Sound insulation system
- Scania IV final engines

With the approved standard configuration and many available options you will receive a high quality end product

- No „wrappings“ on the shafts due to the HAAS cleaning system
- Shredding programmes (waste, wood, mattresses, special)
- Waste shredding <150-500 mm, dependent on the configuration of the shafts
- Special HAAS shaft bearing and gear box protection system
- Revolution speed of shafts individually and infinitely adjustable, ca. 0-40 rpm
- Available in 3 sizes as well as XL-version for an extra strong shredding
- Stationary available in electric version
- Mobile diesel version on wheel axle (hydraulic adjustable), on tracks or trailer
- Low wear and tear costs

CUSTOMIZED MANUFACTURE



① Outfeed belt

- Outfeed belt customized possible
- Individual dropping height and solutions possible



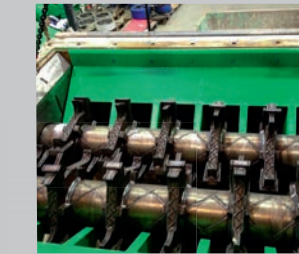
② Overband magnet

- Crosswise or in direction of transport
- Permanent / neodym electric



③ Infeed area

- Individual hopper solutions possible



④ Shredding shafts

- Special wear and tear protection with hardfacing
- High lifetimes
- Specific customization possible
- Low fines content



⑤ Material feeding

- Tilting hopper



⑥ Tiltable transfer

- Breaker bar easy change
- Easy access to the shafts



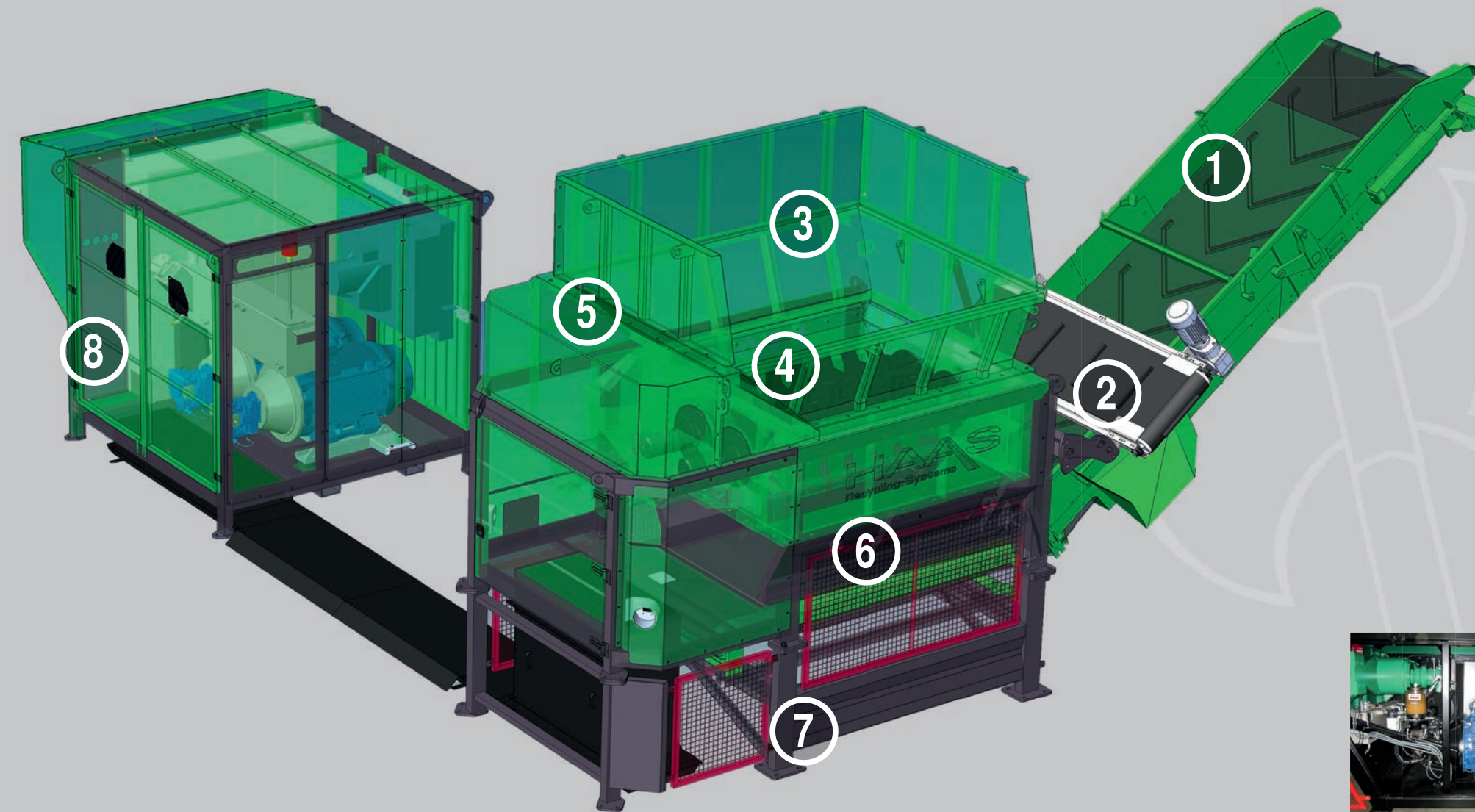
⑦ Support

- Individual solutions possible



⑧ Separate power unit

- Powerpack
- Easy access for service and maintenance works



OPTIONS

- Pre-hardfaced shafts and tools
- Fine tools
- Special varnish in corporate colour

- Belt with steel inlay
- Belt speed adjustable
- Stainless steel drive pulley (for magnet use)

- Mechanically or hydraulically height adjustable magnet
- Engine in tier 2 version without SCR

- CAT engine on request
- Radiator cleaning
- Soft start of main engines

- Frequency converter control for main engines
- Air condition for switchboard
- Heater for hydraulic oil tank

- Fire extinguishing system (in the engine compartment)
- Spray system (dust minimisation)



THROUGHPUT CAPACITY

Designation Type	Power		No. of Shafts	Shredding Chamber Φ x Length (mm)	rpm
	Diesel	Electric			
TYRON 1500	350 HP / 257 kW	2 x 90 kW	2 Shafts*	700 x 1.500	max. 40**
TYRON 1500 XL	400 HP / 294 kW	2 x 110 kW			
TYRON 2000	350 HP / 257 kW			700 x 2.000	
TYRON 2000 XL	400 HP / 294 kW	2 x 132 kW			
TYRON 2500	770 HP / 566 kW	2 x 160 kW		900 x 2.500	max. 30**

* The number and form of the tools is adjusted according to the requested final material.

** The revolutions per minute of the shafts can be infinitely adjusted from 0-40 rpm. Furthermore, both shafts are driven separately, and can thus run with different speed. Due to the variety of the discs per shaft and the tools per disc, an end product of ca. 150 - 500 mm can be achieved.



The HAAS TYRON convinces with high throughput capacities of up to 100 t/h!

	TYRON 1500	TYRON 2000	TYRON 2000 XL*	TYRON 2500
Waste wood	up to 25 t/h	up to 50 t/h	up to 65 t/h	up to 100 t/h
Green waste	up to 35 t/h	up to 50 t/h	up to 60 t/h	up to 85 t/h
Domestic waste	up to 38 t/h	up to 50 t/h	up to 50 t/h	up to 100 t/h
Bulky waste	up to 25 t/h	up to 35 t/h	up to 40 t/h	up to 65 t/h
Industrial waste	up to 30 t/h	up to 40 t/h	up to 45 t/h	up to 85 t/h

*Available on demand. Please request our brochure.

Remark: The indicated capacity depends on the final product, the tools and the tool configuration.

Stronger! More efficient!
Our New One:
TYRON 2000 XL New edition 2.0!

Request our brochure now!





— QUALITY —
MADE IN
GERMANY



HAAS TYRON 2000 XL

Double Shaft Slow Speed Shredder

New edition 2.0

The HAAS TYRON shreds difficult materials, such as:

WOOD WASTE • PALLETS • RAILWAY SLEEPERS • DOMESTIC, INDUSTRIAL
AND BULKY WASTE • CABLE DRUMS • TYRES • PAPER ROLLS
GREEN WASTE • MATTRESSES • ROOTS • ALUMINIUM • FOOD WASTE



HAAS
Recycling-Systems

TYRON 2000 XL

New edition 2.0

The newest and most powerful Double Shaft Slow Speed Shredder in its class. The HAAS TYRON shreds the most difficult of material. Convincing features include: high performance capability, robustness, aggressive in feed, high quality & efficiency, ease of maintenance and life longevity.



XL version

Stronger hydraulic system,
longer lifetime, 30 % power increase



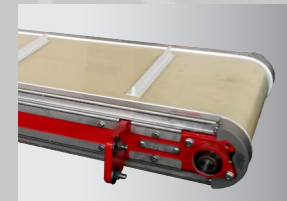
Online monitoring

Worldwide remote monitoring of the machine
for service, maintenance and management



1 Outfeed belt

1400 mm wide out feed belt
with discharge height up to
4800 mm



2 Overband magnet

- Hydraulically height adjustable
- Extra strong neodym magnet



3 In feed area

Additional hopper extension for
bigger in feed volume



4 Shredding shafts

- Aggressive in feed
- Without material wrapping
- 4 crushing programmes (wood, green waste, waste, bespoke)
- Shaft speed, direction and reversing time easily programmable



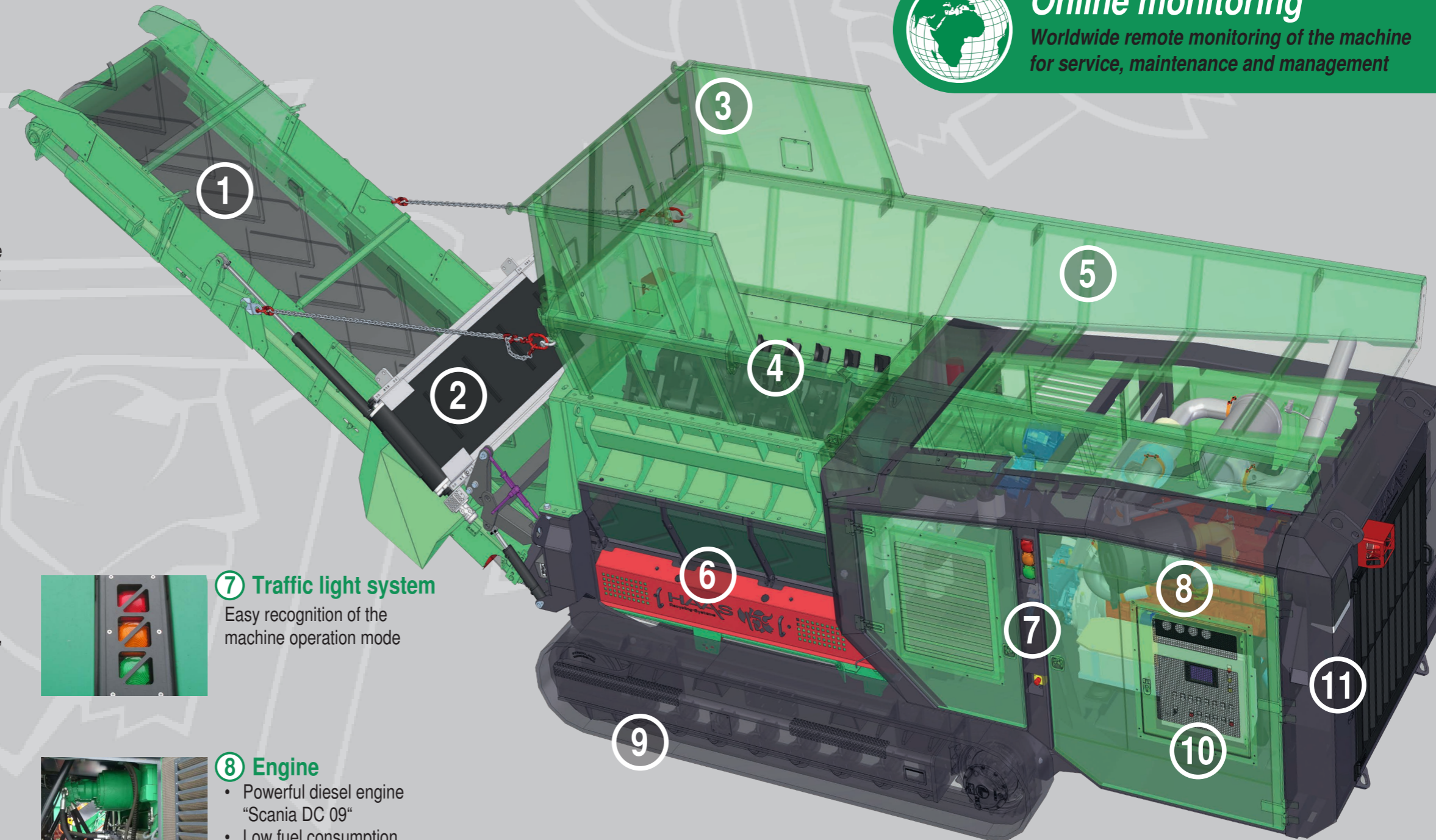
5 Tilting hopper

For the direct in feed of extra
long materials to the shafts



6 Foldable side doors

Quick breaker bar change
and easy access to the shredding
shafts



7 Traffic light system

Easy recognition of the
machine operation mode



8 Engine

- Powerful diesel engine
"Scania DC 09"
- Low fuel consumption
- New engine compartment**
- Easy access for maintenance
- Improved noise protection



9 Tracks

- Easy onsite manoeuvrability
- Optional rubber shoes



10 Multi-functional display

Multi-functional coloured display
for operating and controlling the
machine, as well as interpreting
machine data.



11 Remote control

- Operating the tracks
- Adjusting magnet height

TECHNICAL DATA

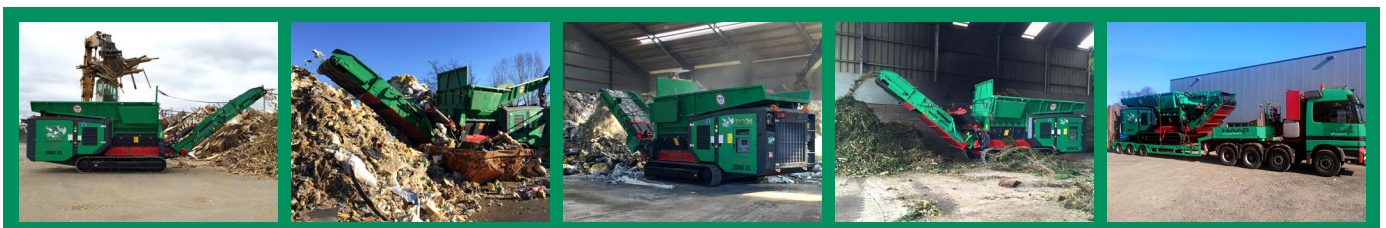
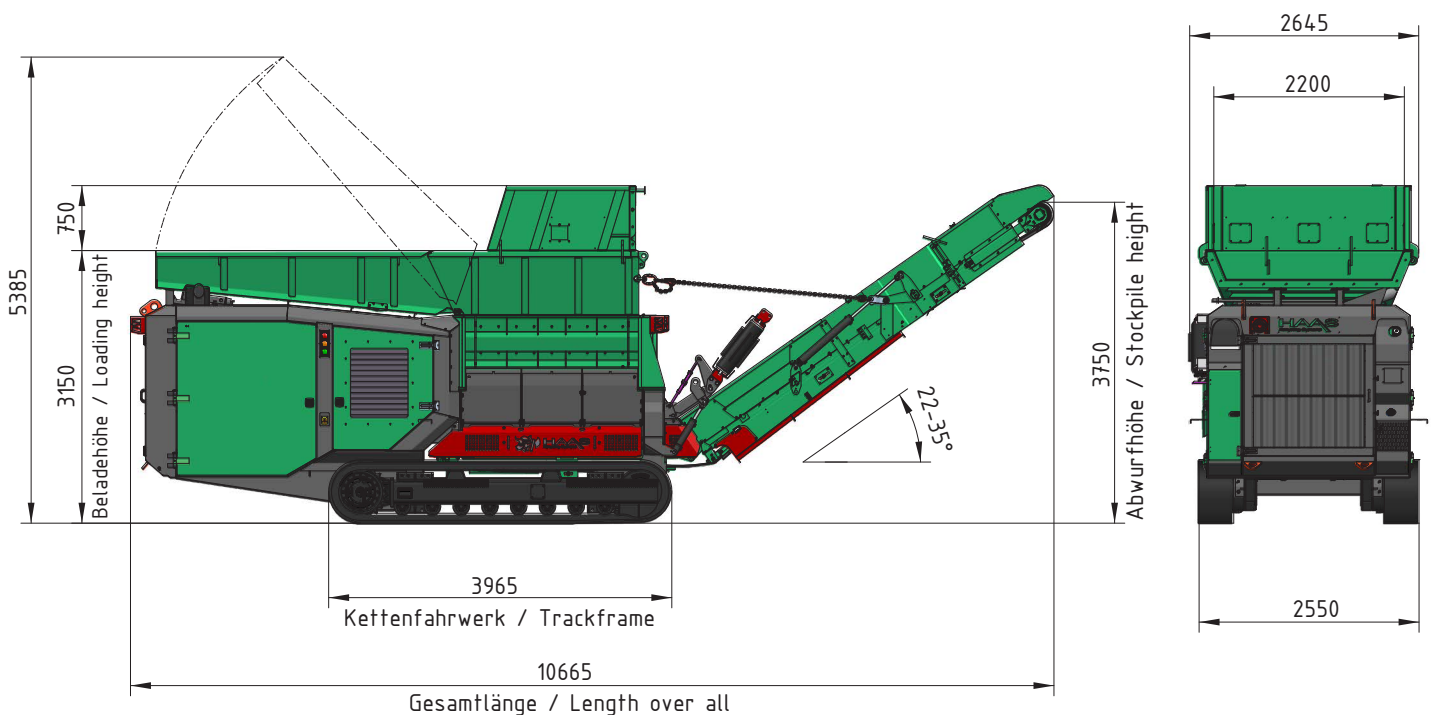
THROUGHPUT

TYRON 2000 XL **New edition 2.0**

Power	294 kW
Length of the shafts	2.000 mm
Width of the shafts	Ø 700 mm
Weight of the machine	25,5 T
Dimensions	10,7 m L x 2,55 m W x 3,15 m H

Waste wood	up to 65 t/h*
Green waste	up to 60 t/h*
Domestic waste	up to 50 t/h*
Bulky waste	up to 40 t/h*
Industrial waste	up to 45 t/h*

* Remark: The indicated capacity depends on the final product, the tools and the tool configuration.



HAAS
Recycling-Systems

HAAS Holzerkleinerungs-
und Fördertechnik GmbH
Unter den Weiden 6
56472 Dreisbach / GERMANY

Telefon: +49 2661 9865-0
Fax: +49 2661 9865-20
E-mail: info@haas-recycling.de
Website: www.haas-recycling.de